

IV Международная конференция учащихся «Научно-
творческий форум

Муниципальное образовательное учреждение «Гимназия №7»
Волжского района г. Саратова

Направление: иностранный язык

The project «The interrelation between doodles
and people's character»

Автор Виноградова Анастасия Михайловна
Учащаяся 10б класса МОУ «Гимназия № 7»
Волжского района г. Саратова
Тел. 8-962-623-98-65

Научный руководитель
Солнцева Евгения Михайловна
Учитель иностранного языка
МОУ «Гимназия №7»
Телефон: 8-902-717-26-13

Saratov, 2023

Contents

Introduction.....	
When do we draw doodles and what do they mean.....	
Practical part.....	
Interview with a psychologist.....	
Conclusion.....	
The appendix.....	
Sources of information.....	

Introduction

Have you ever drawn simple pictures like lines, spirals, flowers, hearts and stars while sitting on a boring lecture or when making a telephone call? Amazingly, but in fact these doodles can tell us a lot about your mood and character traits. We draw them mostly unconsciously.

At present psychologists use doodles in order to conduct psycho tests for their patients or even to make a diagnosis of some mental illnesses.

Tasks

1. To investigate our doodles
2. To learn more about graphical psychology

Aims of the work

1. To learn which doodles exist
2. To learn the relationship between doodles, mood and character traits
3. To learn how to make a doodle analyses

When do we draw doodles and what do they mean

Usually, we draw doodles without paying conscious attention to our actions. We might be influenced by emotions. Most of people take a pen or a pencil and start to draw on a sheet of paper when they feel bored, angry, irritated, sad and so on. If we look at someone's doodles, we *might* know more about a person. So, let's look at some parameters what can help us.

To begin with, it's their size and *spot* on paper. Tiny doodles situated in *one* corner tell us the person is accurate and organised. He loves when everything is on its place. Huge pictures in the

centre of a page are inherent for extravert personalities who enjoys being in a spotlight. Such people usually have jobs connected with publicity: politicians, teachers, actors, singers. Doodles in the top of a page are common for people who are confident and have tons of creative ideas. Sheet's left part is the most wide-spread place to draw doodles. It tells about nostalgic feelings.

Secondly, these are doodles themselves. Drawing stars tells about willing to be in a spotlight or about depression, especially if stars have too many rays. *Circles are a sign of a withdrawn personality or of necessity to be protected.* People usually draw crossing when they feel like they are in a trap. Drawing mazes means a person is trying to find his own way in life. Chess board is inherent for stubborn people who hardly make compromises. Words in frames tell about self-confidence of a person. Drawing saw teeth may mean aggressiveness, anger or readiness to fight.

Lastly, colours also tell a lot about people. Red is a colour of power and authority, orange reveals an outgoing and optimistic person, yellow is a sign of high intellect or intolerance, green means well-being and mental harmony, blue reveals sincerity and patience.

Practical part

I have conducted a survey among the students of my class. I asked them to take a picture of their doodles so that I could analyze them.

Photo 1. Here we can see an ice cream cone drawn with a simple pencil. It is situated in the left top corner and takes a little space. The small size of a picture and its location tell us about accuracy and high level of organisation of the person. There are three circles portraying ice cream balls which are a sign of reticence. The cone itself is sharp and looks a bit like a tooth, so the man who drew it can be a little aggressive. Finally, the fact that this doodle was made with a simple pencil tells about anxiety and hesitation.

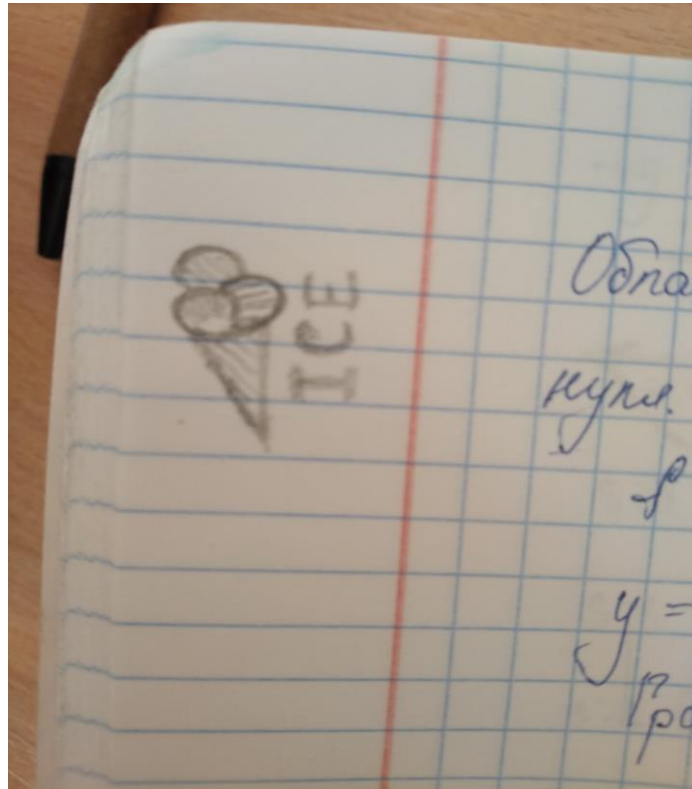
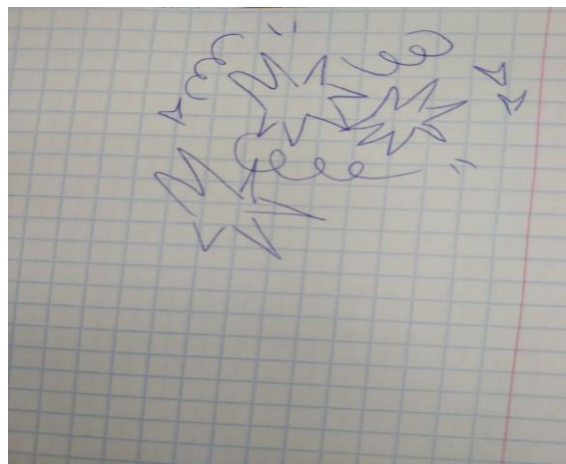


Photo 2. There are spirals, stars, ticks and short lines. Spirals tell us about unsolved problems that concern the author of the picture and cause his emotional disbalance. The person is totally trapped in his emotions. Drawing stars reveals a person who is looking forward to a career growth and public acceptance. He is ready to achieve his goals even if they seem impossible to him. Stars have six or more rays that means the artist is well-organised and careful. Ticks also demonstrate determination in achieving targets. Short lines drawn carelessly are a sign of emotional



lability.

Photo 3. These doodles were drawn by the same person. The only difference is that they were made in a period when the artist

was calmer and less emotional. That's why there are no spirals and small lines.

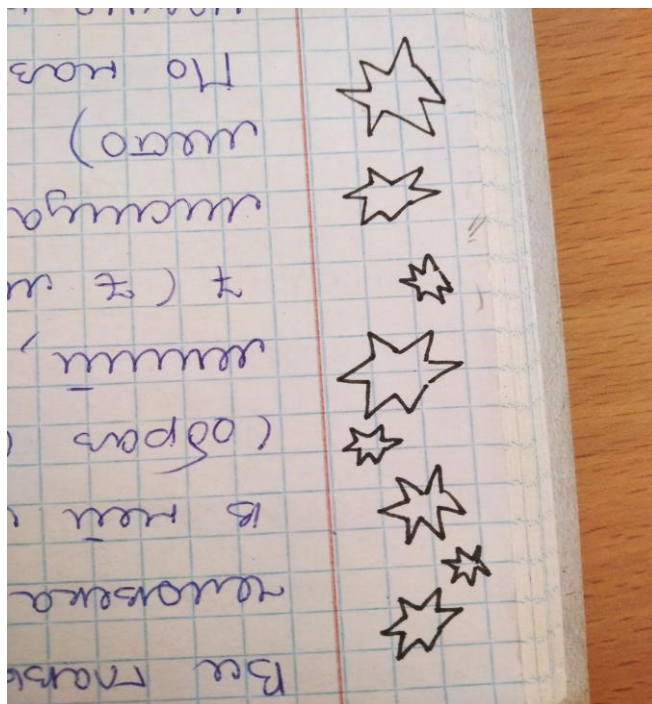


Photo 4. There is a person on this drawing. The picture is situated on the left part of a sheet of paper. As I have said earlier, sheet's left part is the most wide-spread place to draw doodles. It tells about nostalgic feelings. The portrait is full-face, and it is a sign of high level of person's sociality. There are plenty of tiny details. Thoroughness and detailed work are inherent for people who seek perfection. The presence of sketchy lines may mean the artist is under the pressure and feels anxiety or is too scrupulous.

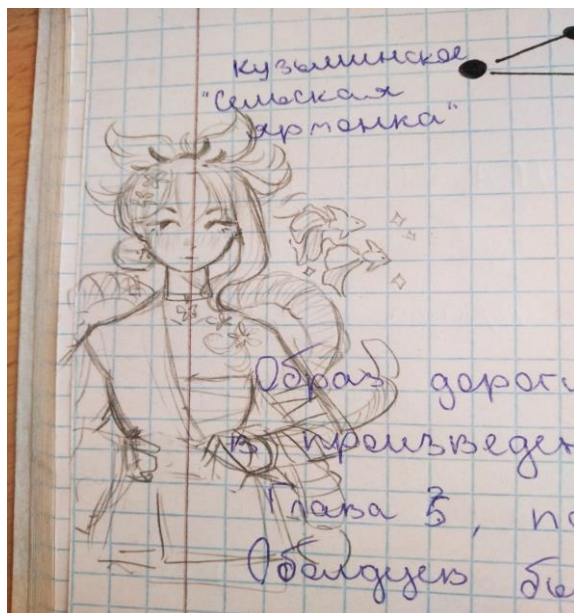


Photo 5. Here we can see a cute green frog sitting on a water lily leaf. The colour of the picture reveals the emotional state of a person. The picture is drawn with green ink which tells about person's well-being and harmonious. It is also a sign of self-confidence. The drawing does not take a lot of space, and this fact tells about the accuracy of the artist. Drawing frogs is a sign of sensitiveness to all living creatures.

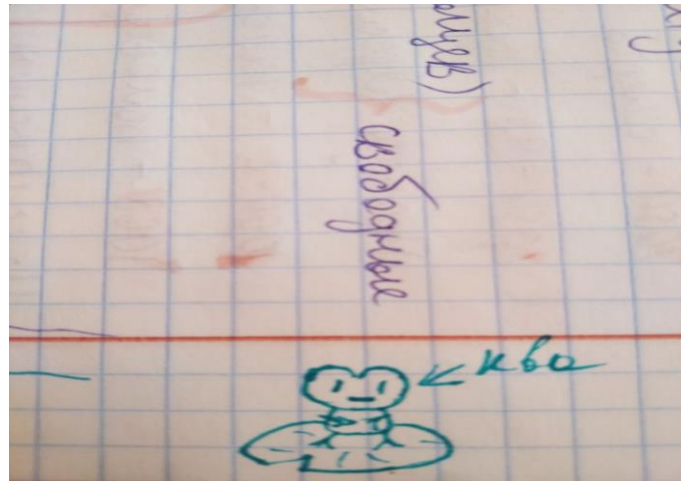


Photo 6. The picture shows us a funny small ghost with a miserable face. He is wearing a black-white cylinder. The picture also takes a little space. It means the artist is punctual and likes when everything is in its place. The facial expression of the ghost shows us truly emotions of the person who draw it. He feels sorrow and needs to be supported.

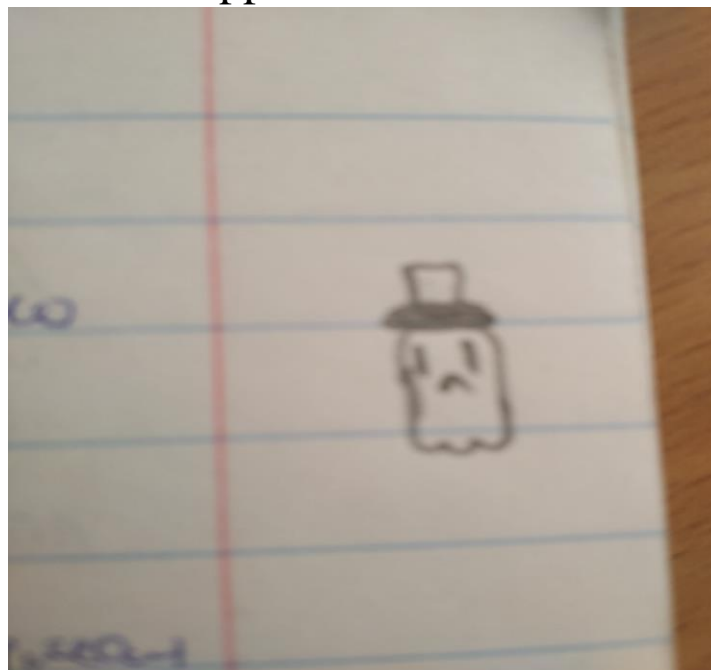
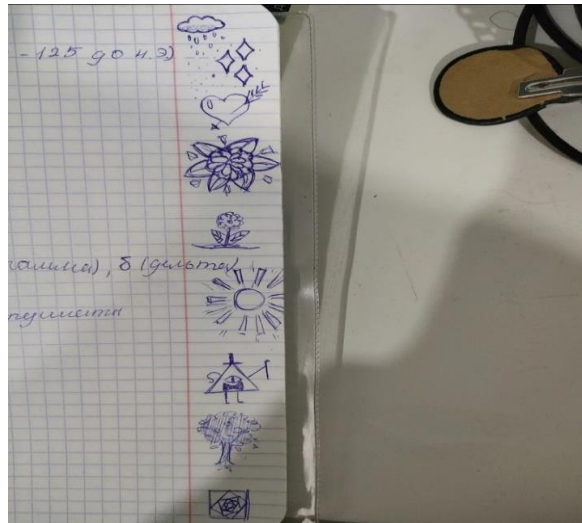


Photo 7. There are various doodles drawn with a blue pen. A cloud in the top of a paper is a sign of freedom and happiness. Stars tell about wish and willingness to be in a spotlight. A heart shows the person's romantic character. Drawing flowers proves the person is close to his family and needs it. The sun means the artist has a tendency to openly express his emotions. A tree probably means the person is vibrant and cheerful.



To sum up, I want to say our doodles are strongly connected to our feelings, emotions and character traits. Pictures of the same person can vary accordingly with his mood as in the pictures number 2 and 3. Sometimes it is even impossible not to express yourself through your doodles, so, they reveal the truth.

Interview with a psychologist

I have asked a few questions to Aik Sargsyan, my classmate. He is going to become a psychologist and study a lot to reach this goal attending special courses.

Have you ever used doodles when doing a psychological analysis? Was it helpful?

- Yes, I have used people's doodles for a few times. It was quite helpful since unconsciously drawn pictures revealed a lot about a person.

Should we take into account only unconsciously drawn doodles?

- Certainly. It is impossible to get real results if the person pays attention to his doodles and controls the process of drawing.

What could you advise people who are going to do an analysis of their drawings?

- I advise them to give a testee a clean A4 sheet of paper and all stuff he needs such as pens, colourful pencils and so on. He shouldn't be distracted during the analysis. It is important.

What does it mean if the person doesn't act accordingly with his 'doodle analysis'? For instance, the analysis shows the person is shy and withdrawn, but in fact he is outgoing and chatty.

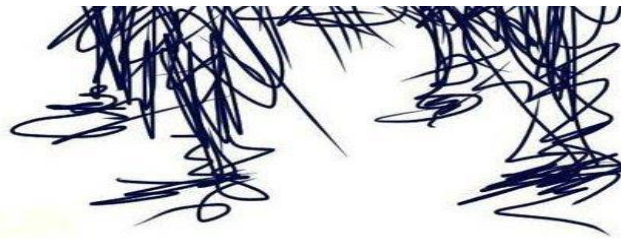
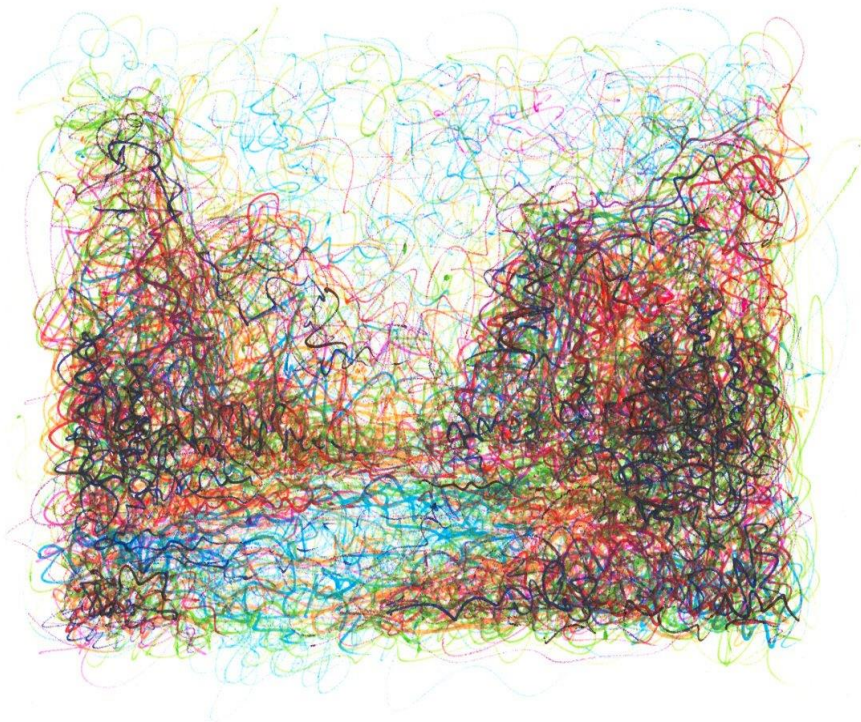
- It means the analysis was not correct enough. It ought to be done again in more proper conditions.

So, it is possible to find curious facts about a person by exploring his doodles. The process of graphical analysis is not challenging at all. The only stuff you need is a sheet of paper and something to draw with such as pencils, pens, felt pens. Also, it is necessary to analyze pictures which were portrayed without paying conscious attention to them in order to get accurate results.

Conclusion

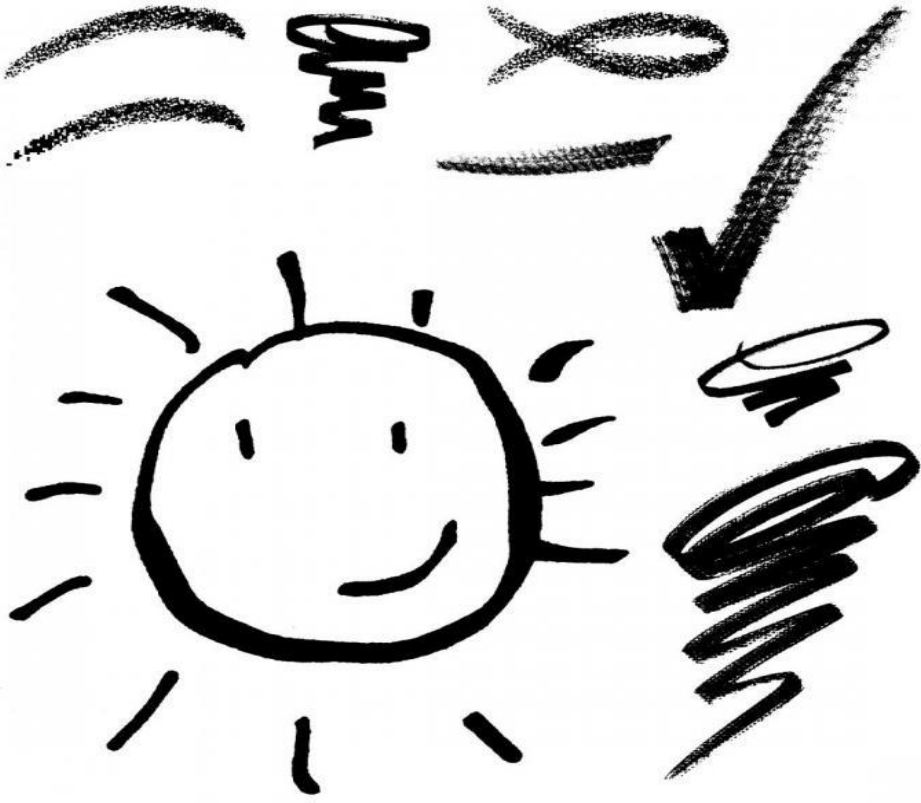
At the end of my work, there are no doubts that doodles, which are often considered to be just useless pictures spoiling paper, can be very handy for learning more about somebody's character traits and type of mood. It is simple to do a graphical analysis if you have some drawing stuff, but you should remember that the person whose pictures will be analyzed shouldn't know about it

Drawings are strongly connected to people's character and



feelings. Pictures of the same person may vary depending on his type of mood. People rarely spot expressing their truly emotions through the doodles, but they do anyway.

The appendix





Sources of information

Literature: 'Graphical methods in psychological diagnostics' by E.S.Romanova and O.F.Potyomkina, 'Psychological drawing tests' by Z.F.Semenova and S.V.Semenova, 'Psychological drawing tests' by A.L.Venger, 'Secret world of the picture' by Gregg M. Fers.

Websites:

www.psychologies.ru

www.infoniac.ru

www.b17.ru

www.econet.ru

www.heclub.ru

www.mystroimmir.ru

www.artshedevr.ru

www.samopoznanie.ru

