

Научно-исследовательская работа

Английский язык

**«THE GUIDE OF NOVOSIBIRSK'S SIGHTS FOR GUESTS ALONG  
SUBWAY LINE IN ENGLISH»**

Выполнил(а):

**Злата Сергеевна Радченко**

учащий(ая)ся 8 класса

МБОУ СОШ №188 , Россия, г. Новосибирск

Руководитель:

**Евгения Владимировна Масленникова**

Учитель английского и немецкого языка

МБОУ СОШ №188 , Россия, г. Новосибирск

Новосибирск 2023

## CONTENTS

INTRODUCTION.....	2
CHAPTER 1. PREPARATIVE “THE GUID OF NOVOSIBIRSK’S SITES FOR GUESTS ALONG THE SUBWAY IN ENGLISH.....	4
1.1 The concept "guide", creation history, his types and use in 2 d cards.....	7
1.2 Interesting places which can be visited along the subway line. The subway is convenient for movements around the city.....	9
CHAPTER 2. EXPERIMENTAL. DESCRIPTION OF SITES AND PLACES....	13
2.1 . Description of sights and interesting places of Novosibirsk along the line of the subway in English.....	15
2.2 Translocation of the chosen Zee Map's sights on the 2D card and creation of multimedia presentation .....	16
CONCLUSION.....	19
REFERENCE LITERATURE.....	22
APPENDIX 1 SUBWAY’S MAP OF NOVOSIBIRSK.....	23
APPENDIX 2 DRAWN ROUT IN 2 GIS.....	24
APPENDIX 3 ADDRESS DISCRIPTION FILE ON ZEE MAP.....	25
APPENDIX 4 AUDIO AND PICTURE FILES.....	26
APPENDIX 5 ROUT FROM SUBWAY TO MUSEUM.....	27
APPENDIX 6 .....	28

## INTRODUCTION

Not in ever instance traveler can do use application which will help to reach expected place. The guide is used by tourists for better terrain unknown association, this guide is about some city, historical place, museum, tourist route. It can be printed, electronic or audiovisual.

We hope that many tourists will come, who will be able to appreciate the beauty of the city of Novosibirsk. However, today there is no electronic or book guide that will help the guest quickly navigate our city. I would like to introduce everyone to our guide.

For many tourists who prefer improvised trips, it is important to see not only sights in a short time, but also to get an idea of the history and distinction of urban culture, and for this they need convenient navigation and a good guide, which successfully combines a high-quality guide.

This is the way: the availability of such a guide is one of the factors of the city's popularity among tourists. It is difficult to generally recognize among foreigners who know little about the place where they will be visited.

The **research question** of the project was the development and creation of a guide in English, on an electronic cartographic service that allows you to see a picture, text, hear audio recordings in English, it is beyond dispute that for a foreign guest to feel "at home" and with full effort enjoy the events.

It follows that we need to determine the route and the location of objects or sights of Novosibirsk along the subway line, since trains in the metro will be more claimed. Such transport is safer, many people are accommodated, fast and reliable. In view of such reasoning, the **aim** of the project is to create a guide of Novosibirsk's places along the subway line for guests in English. This goal has several **objectives**:

- to study the concept of "guide," history, its types on the basis of scientific literature;

- find the sights of Novosibirsk along the metro line;

-create text, audio files of Novosibirsk locations in English and place markers on a 2d map.

To achieve the aim, were used and formed **materials and approaches** in descriptive method, using model Zee Maps mapping service, analyzing existing electronic guides, and collecting information for the guide. The Approach was implemented using Internet resources and printed materials. A lot of useful information found in electronic libraries.

The subject is a guide with markers of sights and interesting places of the city, translocated on an electronic map. Object is the sights of Novosibirsk.

At the preparative stage, was defined algorithm. It is necessary to study the concept of a "guide," which are electronic guides, choose the appropriate option in cartographic service. Explore the city subway and interesting places along the subway line that tourists will like.

The hypothesis of the project: will Novosibirsk attract more tourists if we create an electronic guide for guests in English.

Working, we arrive to the conclusion that the project's novelty is created route. It will be used for quest game groups with mixed age, allowing participants quickly reach the location, due to the subway.

The **practical significance** is that the created guide may be increase the great many tourists that will visit Novosibirsk, as well as an electronic guide can be used by different people, even school speaking proficiency students, to study the city's sights walking around.

## CHAPTER 1. PREPARATIVE “THE GUID OF NOVOSIBIRSK’S SITES FOR GUESTS ALONG THE SUBWAY IN ENGLISH

At the moment, there are a lot of bookish Novosibirsk guide , as well as various Internet sites that call themselves "guides." For comparison, glanced through: Tatyana Gamaley's "Not Boring Guide to Novosibirsk," Anatoly Kvashin's "Novosibirsk for Children," etc. Studied electronic versions, "Guide to Novosibirsk 2GIS," "Google Maps Novosibirsk." In print versions, there is a lot of detailed information about objects to choose from, but not in a foreign language. Electronic versions are rich in diversity, they can sort places into categories, but the information is also not foreign. Their main advantage: the quick provision of information, for example, a foreign tourist must know the place in advance and feed information into search services, get an answer in Russian, tap resulted word into the translator or set another interface language in the settings. Such a search for information about any place in the city takes a lot of time.

If foreigner is in the subway, the task to find place becomes more impossible feat for offline mode. It is difficult to use such electronic guide. Our guide is provided according to the reference where having opened the card it is possible to listen, look, read about interesting places of Novosibirsk in offline mode. So, we have an opportunity to create the guide which would include places where it is possible to eat, have a sleep and have a rest all that is necessary for the tourist opens, at the same time it is possible to reach them using subway, avoided traffic jams.

Be identified the problem of project, we made a hypothesis and began to exposure in the theoretical cartography information and translation base of proper nouns: country, city, street, sight in English. Scientific literature was searched in the Bianca school library, more information was found on Internet search. Adviser and me came up with work plan at the preparative stage.

First, you need to understand what the "guide" means, determine its types and compare different types with each other. The basis theoretical stage will be built on other chosen guide's deposits.

1. Not a boring Novosibirsk guide. "Everything is the most interesting and there's nothing more," author Gamaley T. from 2017. You can be buy it in bookshops or via online order.

2. "Novosibirsk region." Petit Fute Guide from 2006

3. "Novosibirsk." Encyclopedia by Frolov J. (project supervisor)

4. <http://www.openarium.ru> where you can choose places on the map, see photos. There are sections: sights, guide, on the map, excursions. Disadvantages: too much information, it is impossible to build a route if you do not know the name of the street. There are no audio files to listen about Novosibirsk sights.

5. <https://nsk.triproom.ru> There is a map 3d, there are designated locations, there is brief information. You can click and find yourself near the location. Even city inhabitat will follow through directions for a long time, using 3 d map, but foreigner can not came with this task at all. Clicking on the map of the selected place, a person gets into Google maps, where you need to know the names of the streets or the designations of these places on the map should be familiar.

Subsequently, subway local information, its location and convenience for a tourist were studied. Relative proximity list of place along the subway line was arranged, which allow to see interesting places, relax and have a meal. We decided to apply our markers, add audio files, a brief description of the location and photos, phones, street names, links to the sites of the guide's objects, a pre-built route through 2GIS from the metro stations. All information is in English. Locations are edited on the Zee Maps service. Using the link, tourist receives route's information, where all the necessary information is collected in one service, there will be no changeover from map to map, and there will be no self information input. On the right there will

be a pop-up tip, when you click, the entire list of suggested locations opens. By selecting the destination, a chosen marker appears on the map, a short description of the object and other useful information are immediately included. Saving in bookmarks allows you to use offline service information map.

The defense of project was marked by summing up the results, writing conclusions on each task and creating a project issue in the form of a 2d map with reference to an electronic guide, with instructions, with descriptions of locations.

### **1.1 Theoretical part. The concept "guide", creation history, his types and use in 2 d cards**

The predecessors of the guides appeared in ancient times. According to the principle of the guide, for example, the book of the ancient Greek historian Pausanias "Description of Hellas," which deals in detail with Greek sights.

In ancient Rome there were prototypes of a guide, or road workers (lat. Itineraria) of 2 species:

Itineraria adnotata or scripta - schedules of roads that contained only names and distances to places lying along a known path;

Itineraria picta, consisting of distance measurements and geographical maps. [Lyubker, 2007]

In the Middle Ages, one could find such works of literature that had descriptions of routes for pilgrims - itineraria. The first species was actually guides (practical information and recommendations on the route) and "creations" (descriptions of made journeys). [Antonova, 2006]

The first of the medieval "guides" that have reached us is the Bordeaux Traveler, compiled by a resident of the city of Bordeaux, who visited Constantinople and Jerusalem in 333. The first part of the book is the enumeration of settlements on the path Bordeaux-Milan-Constantinople-Jerusalem, indicating the distances between

them. The second part of the work contains a brief description of Palestinian holy places, some monuments of biblical history, their location. [Heacock, 1999]

The oldest of the famous examples of this genre in Ancient Russia are the "Life and Mansion" of Hegumen Daniel to Jerusalem and the Holy Land (beginning of the XII century), unique in of historical value, and the "Book of the Pilgrim" about the passage of the Novgorod Archbishop Anthony to Tsargrad (end of XII century). And the most famous and, probably, the most perfect - "Hoarding for Three Seas" by Athanasius Nikitin, a merchant from Tver. This reliable factual material in his records was for time a valuable source of information about India and Persia. Thanks to the observation and literary gift of the author, it is recognized as a significant monument of ancient Russian literature, translated into many languages of the world.

By the end of the XVIII century. in Europe there were a sufficient number of books that can be attributed to the type of guides. In the middle of the XVI century. Andrea Palladio composed two manuals: "Antiquities of the City of Rome" and "Description of churches, chapels, relics of holy bodies and places of obtaining indulgences in the city of Rome." Two centuries later, the French artist Nicolas Koschen published the three-volume Journey in Italy, in which he proposed a route for art lovers, which included all art collections available at that time, both private and church and state. Finally, before the French Revolution, several editions withstood the curious "New Description of the Sights of Paris" by Antoine Dulor, in which all interesting places were collected in alphabetical order along with a message about baths, clubs, theaters, celebrations and other useful institutions with their addresses that could attract a traveler.

The belonging of a work to guides lies in the author's desire to suggest a "path," but not all works can be attributed to guides. At first glance, it seems that the guide for the traveler is hidden under the title "Pocket book for old people and old women coming to Moscow for the winter, brides and grooms, young and outdated girls, cheeks, red tape, players, etc.," compiled and published by N. I. Strakhov in 1791, but this work is just a satirical collection of advice



We can say that the type of guidebooks includes the now forgotten work of the Russian German Heinrich Storch "Painting of St. Petersburg," which had two publications in German in 1793 and 1794 and one in 1801, slightly changed, in English. [Storch, 1976]

The author took the work of I. Georgi as the basis, but significantly spared it, removed many unnecessary information and sections in the journey, added many useful messages about hotels, hiring vehicles and horses, "catering" etc. And perhaps the first guide throughout the central part of Russia can be called two The "Russian" volume of the five-volume "The Journey of Two French to the North of Europe" by Forcia de Piles, published in Paris in 1796. The author himself explained the goal: "I worked more for travelers than for cabinet readers; I wished to serve as a mentor to those who will visit these countries after me, I wished to spare them from the difficulties I suffered from the lack of Labor, deliberately written for them. [Alpina publish, 2016: 132]

At the present stage, the book edition of Karl Bedecker (1801-1859) was popular, who founded in 1827 in the German city of Koblenz a publishing house of guides to various countries, their capitals and other cities. His guides were very popular in Europe, translated into many languages, The name "hip" has become a household name for publications of this kind, including in Russian. [Enseki, 2014: 89] It was "hips" with their meticulous approach to the selection and display of information that served as models for the best Russian guides of the mid-19th and early 20th centuries. Along with translated compilations from "hips" and other similar publications in Russia appeared their luxuriously published guides to equipped with "a detailed description of the country with the application of many plans and multicast maps, including a large topographic map." [Kopelman, 1909]

From the above we conclude that the guide is a printed, electronic or audiovisual handbook about a city, historical place, museum, tourist route. Used by tourists for better orienteering in unfamiliar terrain. There are 4 types of guides:

- Tourist, which contain not so much information, therefore absolutely unsuitable when traveling independently;

- Information, which differs from tourist ones in that it is devoted to any event, therefore contains a huge amount of historical, geographical or cultural information. They are referred to textbooks.

- Illustrated reference books are distinguished by an abundance of pictures, maps and photographs. Suitable not only for the traveler, but also help to pass the evening after reading.

- Overview, have a lot of useful information, but not suitable for a tourist, as more resemble a book to read.

## **1.2 Interesting places which can be visited along the subway line. The subway is convenient for movements around the city**

In 2021, the construction of the 14th station of the Leninskaya line - "Sports" continues. It is located in the left-bank part of the city, on the banks of the Ob, between the stations "River Station" and "Student." According to preliminary forecasts, the opening will take place in the summer of 2022. Simultaneously with the Sportivnaya station, 500 meters from the shore, a new Ice Palace is being built - for the 2023 World Youth Hockey Championship. The station and palace will be decorated in a single style.

On May 30, 2018, the Russian Hockey Federation received official confirmation from the International Hockey Federation about holding the 2023 World Youth Ice Hockey Championship in Novosibirsk and Omsk. Canada, the USA, Sweden and Finland fought for the right to hold.

Of course, an influx of tourists is expected. Excursion tours may be organized, but foreign guests are expected to travel alone, without escorts and the help of tourist guides and operators.

Air transportation will be carried out from Tolmachevo Airport, and guests of the city have the opportunity to use rail transport. Nonresident citizens have plenty of opportunities to get to Novosibirsk. We offer travelers inside the city to move by metro. In Novosibirsk there are 2 lines: Leninskaya and Dzerzhinskaya. 2021 will please 14 Sportivnaya station, its opening will be in time. Many citizens prefer the metro, since it is safe, fast, inexpensive. In addition, there are other advantages. (see Appendix 1)

Firstly, a very convenient schedule for the metro. Daily operation from 05:45 to 00:00 in the lobbies of the stations. The first train is sent from the terminal station at 06:00. The transfer of passengers from one line to another at 00:00 stops. Within 10 minutes after closing the station at the entrance, the passenger must leave it.

Secondly, there are unlimited opportunities for the movement of sedentary citizens and guests of the city. Subway employees assist in accompanying persons with disabilities. It is advisable to issue an application for escort in advance by filling in the necessary fields on the Novosibirsk metro site: name, telephone, departure station, date and time of arrival at the station, category of disability. It is also recommended to call (+7 383) 222-49-80 beforehand.

Thirdly, passenger safety is above all else. The video surveillance system covers all stations of the Novosibirsk subway. Video cameras are installed in all rooms where passengers have access. The data are received in real time at the situation center, where employees of the police department for the protection of the metro are on duty. Thanks to continuous information, employees can quickly respond to various situations that arise on station platforms or in train cars.

Having considered the line of the subway, we chose 12 interesting places. Tasks by search of locations put such: close location to stations of the subway, interesting types, useful information, the price list shouldn't exceed the average prices around the city. The majority of places has the highlight and the Russian color. Further briefly we will define locations and those distinctive features of sights for which they were entered in the list.

1. The Mirotel hotel is located in shopping center, in 2 minutes walk from the Marx Square metro station and in 6 km from Alexander Nevsky Cathedral. There is a bar, simple restaurant and a pizzeria with the wood furnace. Besides, at the disposal of guests a karaoke, gym and dancing club on the first floor.

2. The water tower at Marx Square is one of important architectural dominants of Marx Square. Has height approximately equal to height of the eight-story house, diameter of an external circle of walls — 19 m. Thanks to the height towers over later surrounding building, creating interesting architectural accent.

3. The Gorsky hotel is modern, multipurpose 22-storey hotel complex in which it is comfortable to have a rest and to work productively.

4. Picnic paradise - the unique place in Novosibirsk, a corner of the picturesque nature in the heart of the megalopolis. The located on the bank of the lake, entertainment complex, contains in itself skiing lodge, a skating rink, restaurant and cozy heated Finnish a grill - houses.

5. A snowboard the park for fans of the skis and a snowboard doing sports professionally November till March. In the territory of the resort several routes of different complexity are located and the minimum infrastructure is created.

The ice town is located on Mikhailovskaya embankment. A park of ice sculptures, a complex of high-speed ice slides, a heating point - combined with a cafe operates from 11:00 to 22:00.

7. The Museum of the Oktyabrsky District is an unusual, cozy museum, combining the functions of a strict historical exposition, a children's play room and a script composition for improvising visitors.

8. Cafe "Kadri" is located in Oktyabrsky district, has a hall designed for 60 seats. The institution offers visitors business lunch from 12:00 to 16:00, as well as services in organizing banquet events and family holidays.

9. Novosibirsk Academic Opera and Ballet Theater, NOVAT is a complex and unique architectural complex, and has the status of the cultural heritage of the Russian Federation, founded in 1945. It is one of the leading theaters in Russia.

10. We think in the route, there must be a place where the tourist, like at home. Therefore, the KFC fast food restaurant was chosen, where 2 options are takeaway food or you can have lunch in a cozy place.

11. The elite Marriott Hotel in a magnificent Art Nouveau building. Located in 5-minute walk from the Novosibirsk State Academic Opera and Ballet Theater and 1.5 km from Alexander Nevsky Cathedral. The building has: bar, cafe, gym, swimming pool, spa.

12. The only museum of the Sun in Russia. In the collection of exhibits: images of the Sun, the solar gods of ancient civilizations, made of wood from materials of archaeological finds. The museum has collected about 2,000 exhibits dedicated to the Sun - of which more than 500 are authored in wood carvings by the founder of the museum Valery Ivanovich Lipenkov.

Regardless of the form of the guide, it must correspond to the locations of the sights. Data should not be outdated or untrue, since because of this, many guides are out of circulation or completely forgotten.

## CHAPTER 2. EXPERIMENTAL. DESCRIPTION OF SITES AND PLACES

We decided on the route and places that will not disappoint foreigners or guests of the city. Getting acquainted with the information about time, sightseeing tours, open areas for guests, etc. From all the above we conclude that our route should be mobile, safe, exciting, even in a critical epidemiological situation, tourists will be able to go to places built along the route. Since we are planning for the future, we have checked the operating modes during the epidemic wave and are confident that half of our locations will be opened, since their work did not stop in a difficult situation in 2022 and they are designed for a large number of people.

It was mentioned above that we offer city guests to travel by metro, the safest and most convenient transport, and with this calculation, places were selected and markers were placed on the map.

So 12 places were chosen:

1. Hotel Mirotel
2. Water tower on Marx Square
3. Gorsky Hotel
4. Picnic paradise
5. Snowboard Park
6. Ice town
7. Museum of the Oktyabrsky district
8. Cafe "Kadril"
9. Novosibirsk Academic Opera and Ballet Theater
10. KFC
11. Marriott Hotel

## 12. Museum of the Sun

Places for tourists		
Have a meal	Picnic paradise Cafe "Kadril" KFC	fast food restaurant native cuisine
Have a rest	Hotel Mirotel Gorsky Hotel Marriott Hotel	disposal of guests a karaoke, gym and dancing club  comfortable
Attractions	Water tower on Marx Square Snowboard Park Ice town Museum of the Oktyabrsky district Novosibirsk Academic Opera and Ballet Theater Museum of the Sun	exhibits unique architectural complex historical exposition a skating rink high-speed ice slides architectural accent

After looking at these places in 2GIS and Zee Maps, they found out what data are indicated on the maps. You must specify the country, street, zip code, you can still add a phone, mail address and location characteristics or specify buildings for landmarks on the ground.

On the Internet, they found a lot of information about how to translate countries, streets, squares. Having authorized the map on the Zee Maps cartographic service, putting markers on the map, they began to enter data into the rallying window. All information has been sorted by value. The data were filled in only in English. In the

"details" section were indicated: country, city, street, postal code. A text describing the location is inserted in the "description." An audio file with the same information as in the "description" was added to the "media." There is also a photo of the object of the guide, links to sites of places phone. (see Application 2)

## **2.1 Creation of audio files and drawing markers of the chosen sights on Zee Maps for tourists**

On the map, you need to select a country, a city. Then there are a huge number of symbols indicating places of rest, entertainment, eating, etc. Moving along the map using the cursor, we identified the necessary objects for the route, set markers. You can select any color and symbol. When you click on the building, a window appears where we changed the address data, that is, we entered the data translated into a foreign language.

At the next stage, phones, mail address were found on the Internet and information was inserted in the "details" section. When you click on the blue active email icon, we move from the map to the site where there is additional information about prices and services. Photos of sights copied to the section "media." When you click it, the picture appears in the foreground. They tried to choose photos in good quality and from the facade side of the building.

After reading the information on the selected 12 places, it was necessary to reduce unnecessary information. After translation into English, the text material was recorded using the program "MP3 recorder," since other recording programs did not have mp3 quality. There was no such information in the settings of the cartographic service, in the refinements of the authors of Zee Maps there was nothing specific either. In this regard, the stage of saving and inserting audio recording in the form of an audio file on the card took more than a week. Many well-known voice recording programs have been tried. (see Appendix3)



On the map creation service, you had to click on the place marker, in the pop-up window you indicated "media," selected and inserted from the computer. Thus, 12 audio recordings were inserted. (see Appendix 4)

Unfortunately, there was no section or additional window to insert the second photo or more accurately say screenshot. Therefore, the screens were saved in the "website" section. In one dialog, information was collected: country, city, region, address, photo, short voiced information and in the form of text, phone, mail address that redirected to the institution's website. It was necessary to provide a route from the nearby station to the point in the guide. Trying to make "create route" in separate tab. In the first version, you need to copy the address of the point of departure and destination, but you can find it by clicking on the location marker and receiving the necessary information about it. It is inconvenient to move between tabs, especially on your phone. In the second version, data from our card can be transferred to the Novosibirsk 2 GIS card, where you can set the departure and destination point by choosing a place on the map. However, if one letter or digit is wrong, the information is reset. There are also situations where 2 or more institutions are located at the same address and in the same building. Orienteering will be difficult. Therefore, for the convenience of a tourist, we built a route from each nearby station to places along the guide. They made a screen and copied it to the "website," which is under a short description. The restriction on the photo was 1 instance, so the route screen was not saved in the "media" section. (see Appendix 5)

We set the task so that the foreigner could listen, see a place not only on the map, but also in the electronic version. For this, the Zee Maps mapping service is well suited, where you can add audio, video, site address, photo, text, phone, postal address and code.

## **2.2 Translocation of the chosen Zee Map's sights on the 2D card and creation of multimedia presentation**

Cards have now become a necessary element. They are present on almost every website. In the interfaces of many mobile applications, you can also often find a map of the area. In Uber-like services, you can't do without a card. How to create a unique map and do not spend a lot of time on design? Our selection of tools for designers will help to easily create a map in the style of the service that it develops.

A free tool for creating interactive maps of Zee Maps allows the designer to easily create a unique map for the needs of his layout. The service does not require registration supports free and advanced versions. You can select countries (cities, zones) in colors in the Zee Maps, as well as add unique markers.

What is interesting - this service for designers even allows you to insert videos on the map. You can experiment with insertions of video and audio markers, which given the map a special look and highlights among others.

The idea of connecting markers of interesting places in Novosibirsk into a 3d form and a two-dimensional map of the city. However, our technical abilities failed, so it was decided to make a screenshot electronic guide, connect all the markers with one line, thereby showing the metro line in yellow, and highlight the markers themselves with blue circles. The tourist will have 2 d in his hands, instructions for using an electronic guide, to which he goes by link, as well as a brief description of the places along the route.

After that we create the presentation, the project materials from the preparatory, main, final stages were used. All the slides are in a foreign language. The first slide contains information about the project name. The second slide exposes the target. The third lists the tasks arising from the goal. On which, in the final stage, relevant conclusions were drawn. The fourth slide shows the project execution form. It provides an electronic guide service with presented interesting places of the city, which will especially emphasize the merits of the winter beauties of Novosibirsk. The

fifth slide shows the application of the guide. The sixth slide shows the image of a modern tourist and what requirements he makes for modern guides. The seventh slide shows the merits of our guide with instructions for using. It was hard to choose very useful and main information, but for this task need to summarize.

[https://docs.google.com/presentation/d/1qdzkXICmeM0Nm-GiKNWWfqEAj\\_q6hYdl/edit?usp=sharing&oid=117948895869176492107&rtpof=true&sd=true](https://docs.google.com/presentation/d/1qdzkXICmeM0Nm-GiKNWWfqEAj_q6hYdl/edit?usp=sharing&oid=117948895869176492107&rtpof=true&sd=true)

## CONCLUSION

Not to do each traveler or the tourist without supportive application which will help to reach, reach, reach the necessary place. The guide is used by tourists for the best orientation in the unfamiliar area, this reference book about some city, the historical place, the museum, a tourist route. It can be printing, electronic or audiovisual.

During the project studied the concept "guide" and its types, decided on his important role in the modern world where globalization is very developed. The guide or the electronic guide will allow to smooth gaps ignorance of locations of buildings and sights. This is the faithful assistant for foreign guests. It will make them more mobile and self-assured. From the aforesaid we draw a conclusion that the guide - the printing, electronic or audiovisual reference book about some city, the historical place, the museum, a tourist route. They used by tourists for the best orientation in the unfamiliar area.

Difficulty consisted in development and creation of the guide in English, on the electronic cartographic service allowing to see the picture, the text, to hear audio recordings in English that is indisputable it is necessary for the foreign guest to feel at home and fully to enjoy events.

Having studied paper and electronic guides and having considered the line of the subway, we chose 12 interesting places of the city of Novosibirsk. Tasks by search of locations put such: close location to stations of the subway, interesting types, useful information, the price list shouldn't exceed the average prices around the city. The majority of places has the highlight and the Russian color. Further briefly we will define locations and those distinctive features of sights for which they were entered in the list.

The result was the creation of electronic markers of selected places and mapped Zee Maps. Transfer markers to the 2d map with a selection of the metro line and sights. A video instruction on selected places along the metro line was also created.

A multimedia presentation has been created for the practical part of project protection. The guide we created can contribute to an increase in the number of tourists visiting Novosibirsk, as well as an electronic guide can be used by different people, even school students, to independently study Novosibirsk and walk around its sights, which have conversational knowledge of a foreign language. Working on the project, we came to the conclusion that the route we created could be used to create different-age quest games, allowing participants to quickly reach the location at the expense of the subway.

In preparing the draft, the following conclusions were reached at the final stage:

- the concept of a "guide" has been studied, its types are based on scientific literature;
- sights of Novosibirsk along the metro line;
- created text, audio files of Novosibirsk locations in English and put markers on a 2 d map.

The aim and objectives have been proven, but many technical problems have arisen when ideas cannot be transformed into a specific object or some data may not be fully preserved.

We concluded that a 2d map with an electronic resource that any guest of Novosibirsk can use and will attract more tourists, since such a guide allows foreigners to feel mobile in a foreign place.  
<https://www.zeemaps.com/map?group=4037570>

We have many plans to continue our research: to find more native culture sights, where you explore local history museums, food services with nation cuisine. We will work till next year.

## REFERENCE LITERATURE

1 . Lyubker F. The real dictionary of classical antiquities, per. With it. - M., 2001. CD-ROM edition: - M.: Director Media Publishing, 2007.

2. Antonova Z. V. Formation and development of the guide as a type of publication. - M.: MGOU, 2006.

3. Heacock R. Bordos traveler. Orthodox Palestinian Collection. - St. Petersburg. 1999. — T. 1. - Out. 2. - Kn. 2.

4. Modern edition: Pocket book for visitors to Moscow... In three parts. M.: Alpina public, 2016.

5. A description of the capital and Russians is published in: Forcia de Piles. Walking in St. Petersburg Catherine the Great: Notes by a French traveler. St. Petersburg: Parity, 2014. As an appendix to the book, part of the above book by H. Storch "Picture of St. Petersburg" was published 1976

6. BSE, hip articles, guide Enseki K., 2014, 89 p.

7. Publications by P. Kopelman. Russian guides to Western Europe "Russian Bedeker." Guide to Switzerland. - St. Petersburg, Odessa, 1909.

### E-Resource List

1. <http://www.openarium.ru>

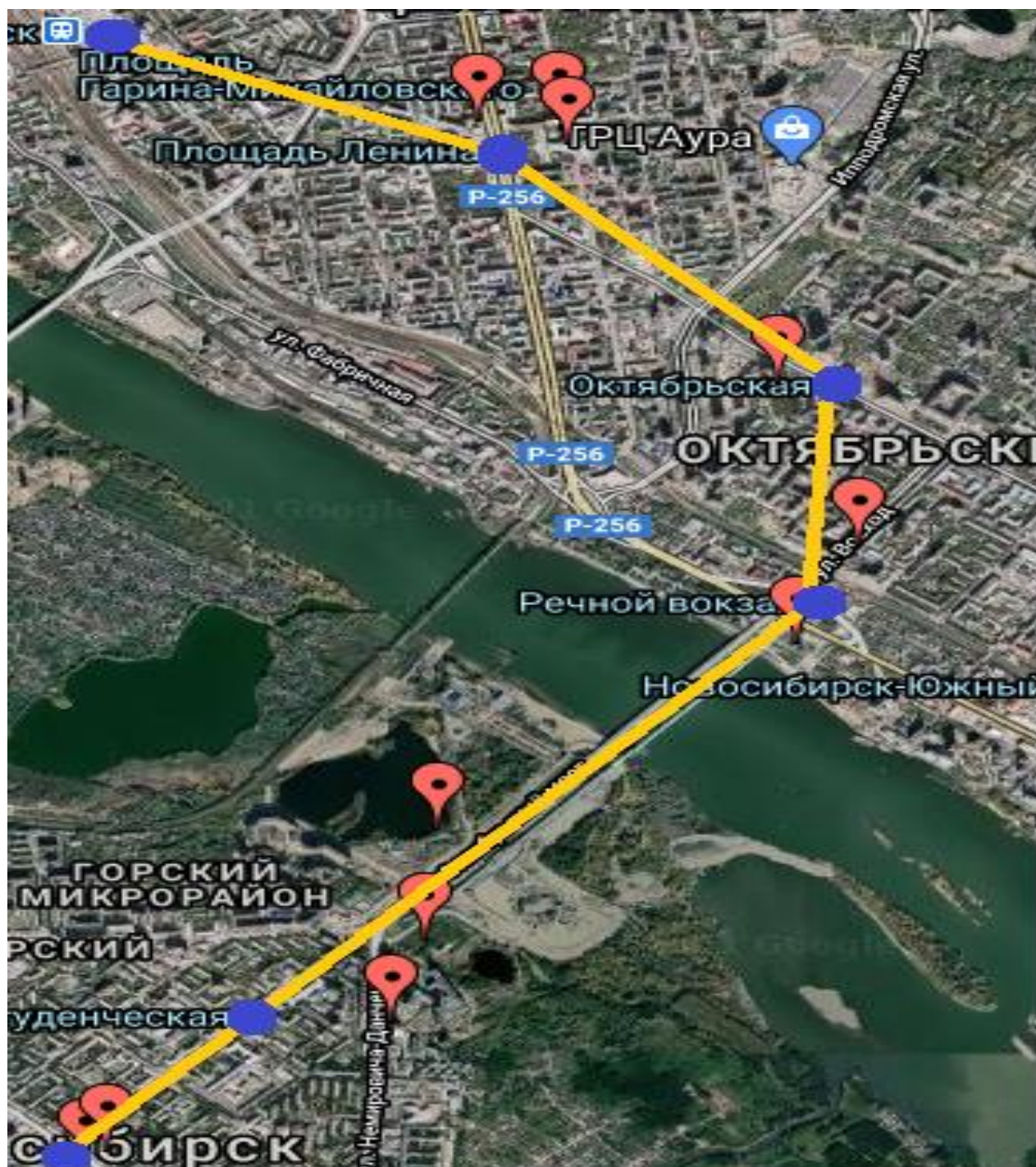
2. <https://nsk.triproom.ru>





## APPENDIX 2

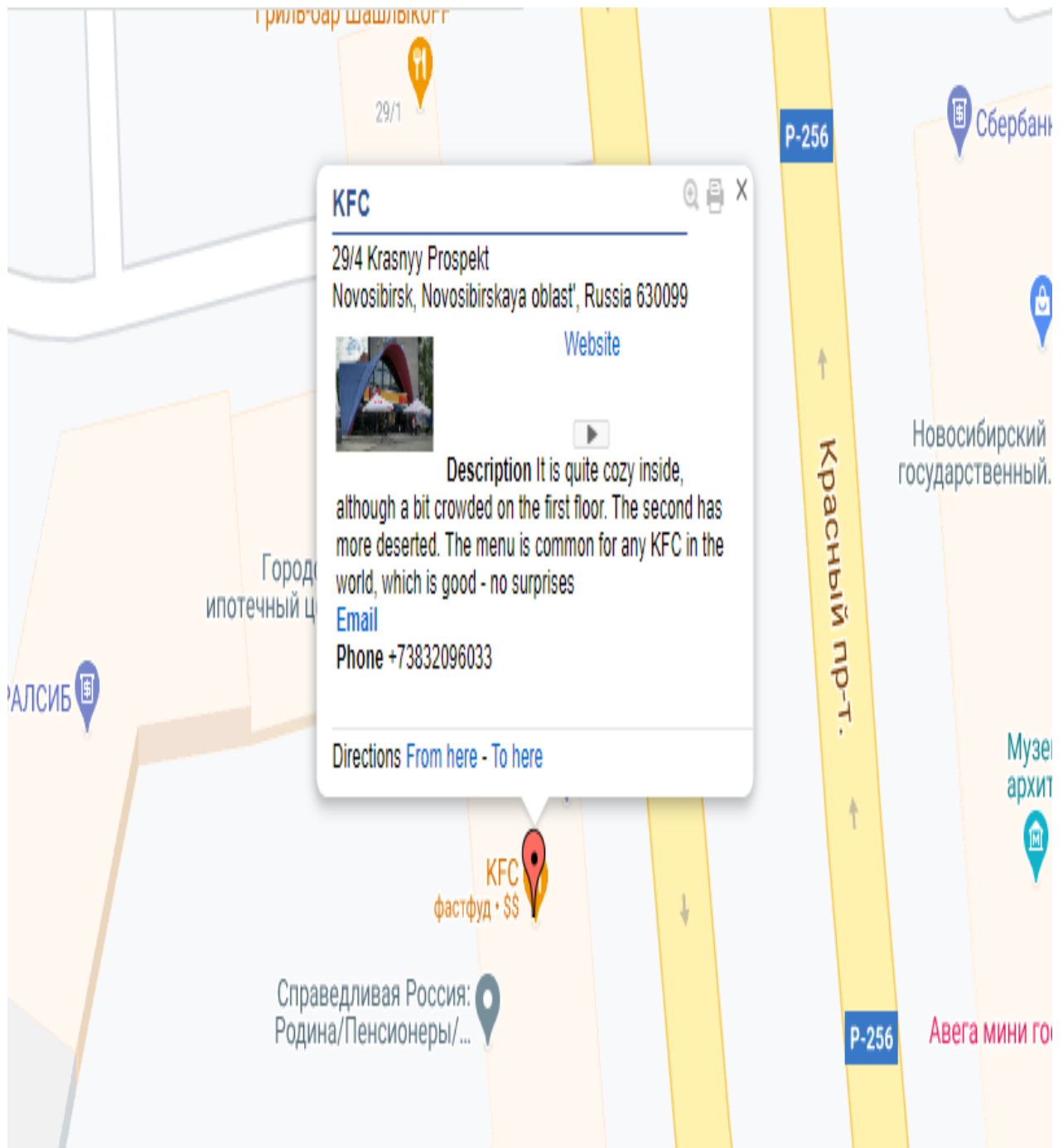
Drawn route in 2 GIS





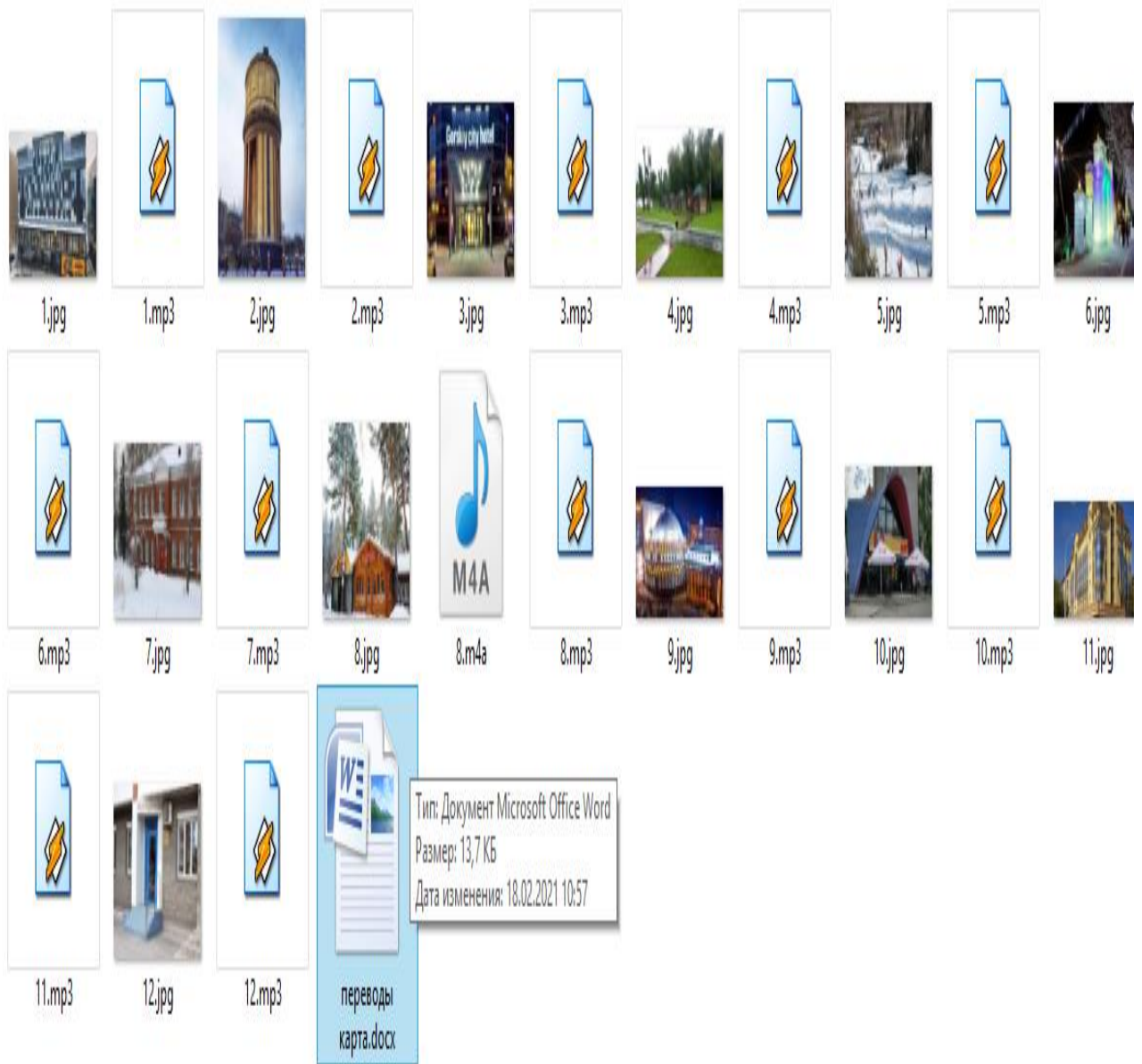
## APPENDIX 3

### Address description file on Zee map



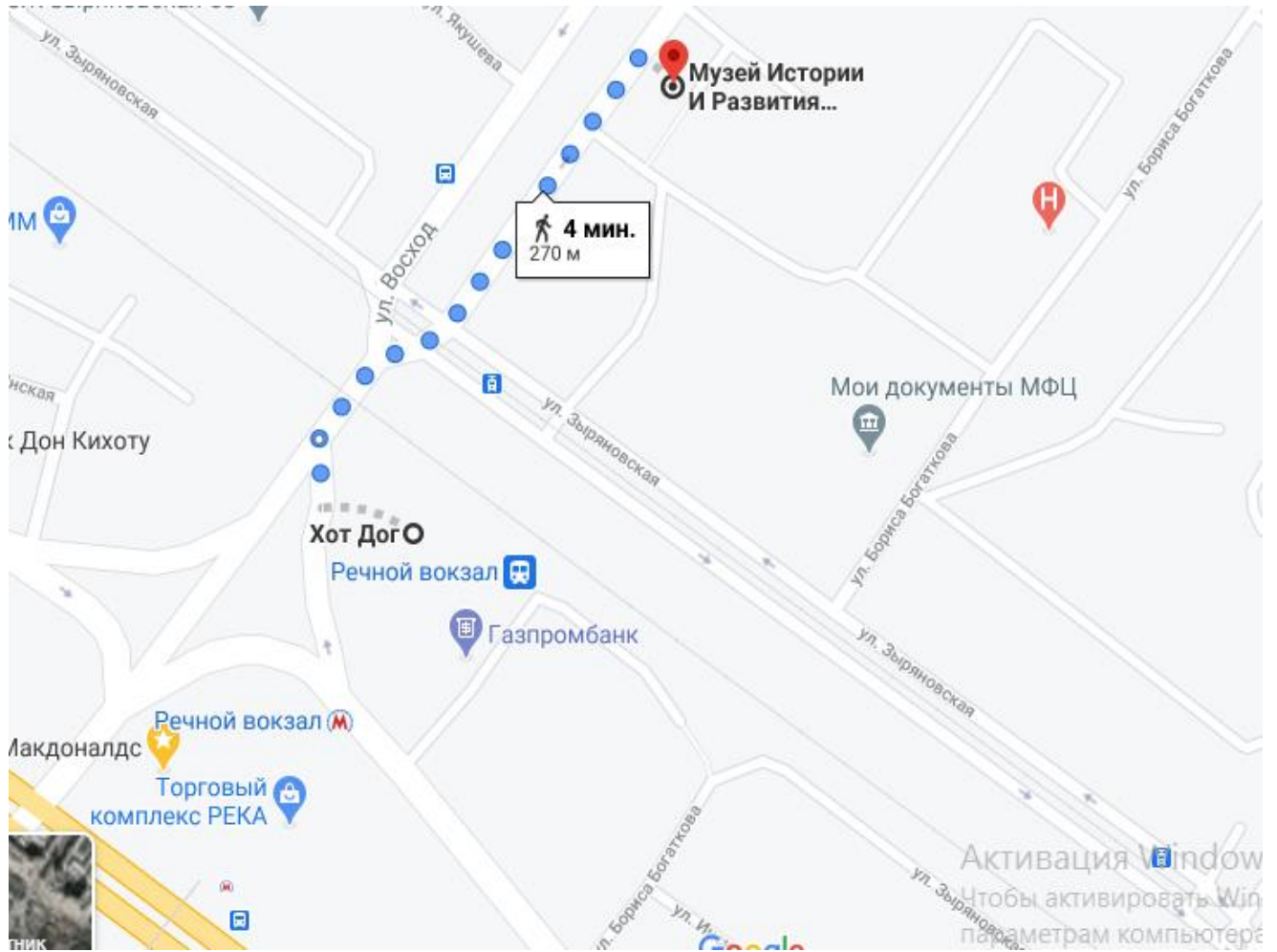
# APPLICATION 4

## Audio and picture files



# APPLICATION 5

## Route from subway to Museum



## APPLICATION 6

1. Mirotel Novosibirsk 5. Snowboard Park 9. Novosibirsk State Academic Opera and Ballet Theatre



2. Water tower 6. Ice town 10. KFC



3. Gorskiy City Hotel 7. Museum of History and 11. Novosibirsk Marriott

### Development of the Oktyabrsky

#### District



4. Picnic paradise 8. Quadrille, cafe 12. Museum of the Sun



# Novosibirsk guide

<https://www.zeemaps.com/map?group=4037570>

1. Choose place
2. Push marker
3. Select media section
4. Listen, read information
5. Specify information by phone or on the website
6. Find rout on section website
7. May use online or offline in the tab